



Tanzania GIS Exploration Adviser

Overview

This multi-client dataset is part of the Lynx 'GIS Exploration Adviser' series of products tailored to exploit the functionality of modern GIS methods. The dataset comprises a variety of exploration & production related maps linked to well & field databases, well-logs/summaries and geologic sections assembled for use with the Esri ArcGIS application suite. Associated reports and diagrams are delivered in PDF format and are context-linked to ArcMap layer features.

TANZANIA CONTENTS LIST

Culture

- Administrative Areas
- Country Outline
- Lakes
- Railways
- Roads
- Towns

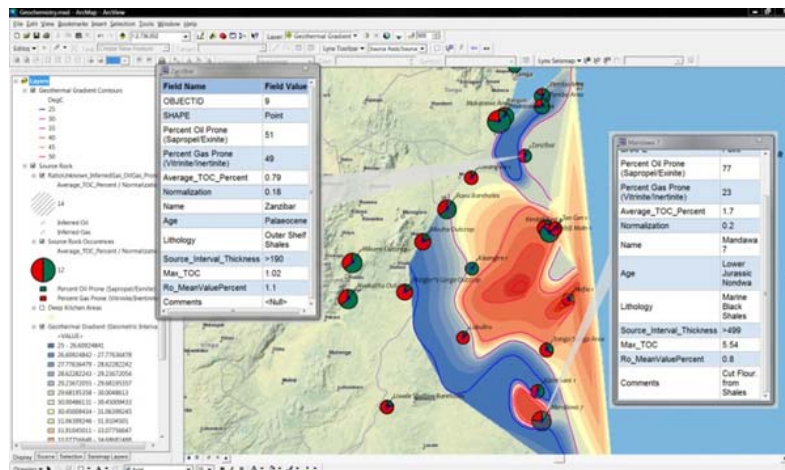
Hydrocarbons

- Concessions
- Fields
- LAS Digital Well Logs
- Well Summaries
- Wells



Petroleum Geochemistry and Geothermal Gradient

- Deep Kitchen Areas
- Geothermal Gradient (Contours & Geometric Interval Grid)
- Source Rock Occurrences (Approx Percent Oil, Approx Percent Gas, Average TOC Percent, Age, Lithology, Source Interval Thickness, Max TOC, Ro Mean Value Percent, Comments)



Hydrocarbon Plays

Fault Zones

Faults

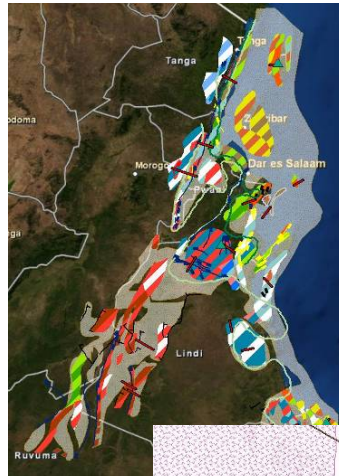
Geologic Section

Geological Provinces

Hydrocarbon Plays

Limits

Oil Seeps



Paleogeography

Early Cretaceous (Neocomian-Barremian)

Early Jurassic

Late Cretaceous (Turonian – Maastrichtian)

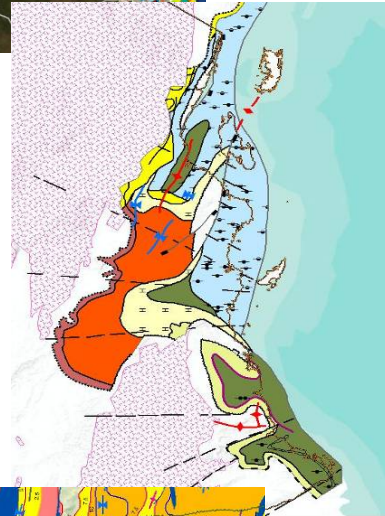
Late Jurassic (Callovian – Tithonian)

Mid Cretaceous (Aptian – Cenomanian)

Mid Jurassic (Bajocian – Bathonian)

Paleogene

Permo – Triassic



Structural Features and Depth to Basement

Anomalous Gravity Low

Approx Depth to Basement

Axis

Depth to Basement Contours

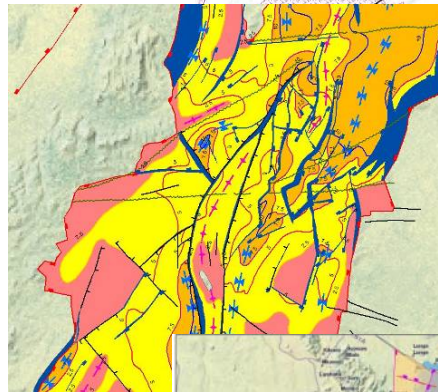
Fault Zones

Potential Field Lineaments

Salt

Structure Faults

Volcanics



Tectonics

Basement

Basement Discontinuity of Fracture

Depth to Basement

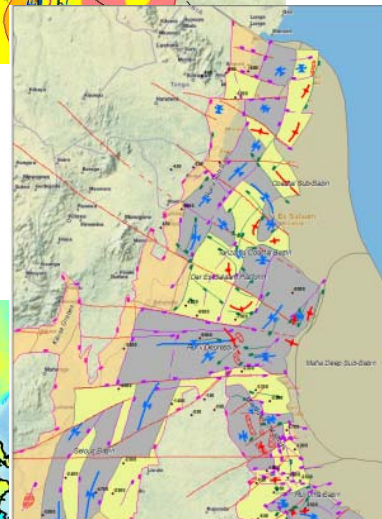
Faults

Grav Mag Axis

Intense Radioactivity Possible Uranium

Target

Residual Gravity Low

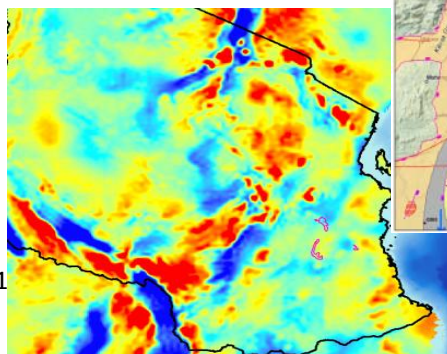


Imagery

Magnetics (EMAG2)

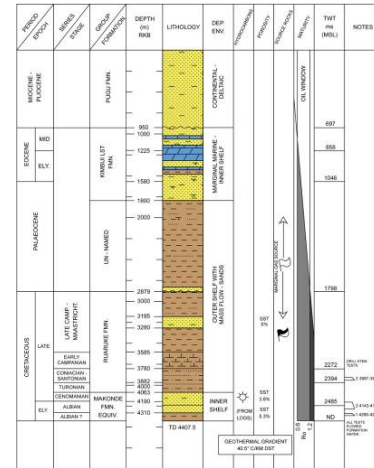
Gravity (DNSCO8 & Sandwell)

Bathymetry (GEBCO)



Well Summaries

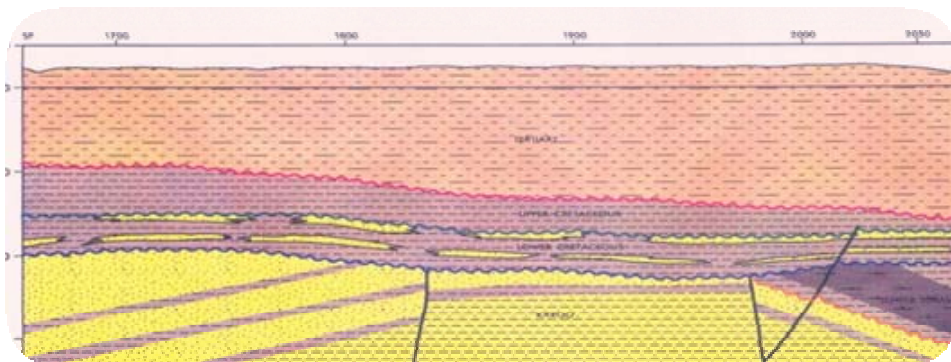
Thirty eight (38) raster well summaries, linked to their position in the wells feature class, depicting: Period/Epoch, Series/Stage, Group/Formation, Depth (m) RKB, Lithology, Depositional Environment, Hydrocarbons, Porosity, Source Rocks, Maturity, TWS ms (MSL), Notes.



Geological Structural Cross-Sections

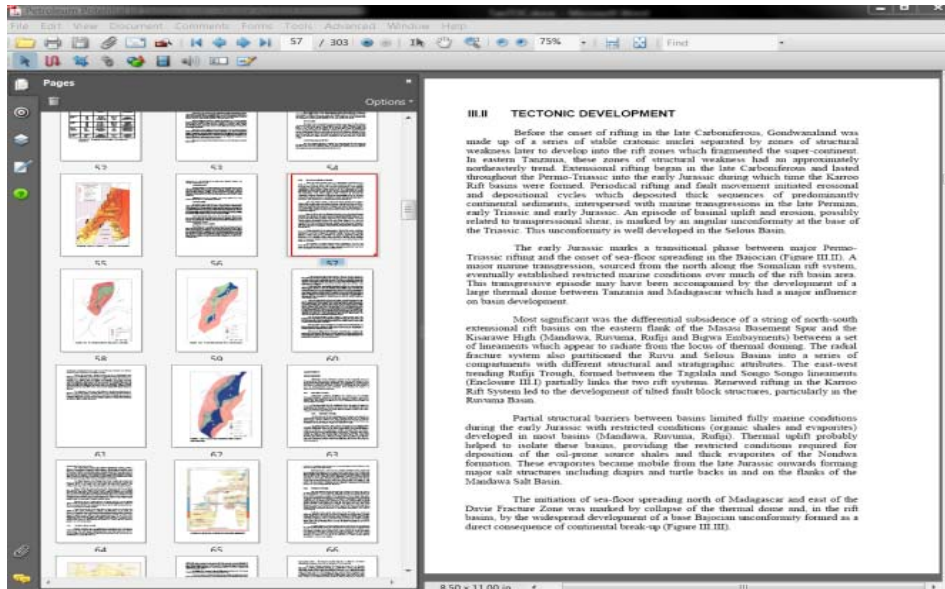
A series of eighteen (18) structural cross-sections based on seismic lines tying important wells and major discoveries throughout the country.

- Northern Ruvu Basin Leads Central Ruvu Basin Leads
- Southern Ruvu Basin Leads
- Lukuliro Area Lead
- Northern Selous Lead
- Central Selous Fault Block Leads
- Central Selous Triassic Lead
- Songo Songo Shelf Lead
- Mid Eocene Mound Lead
- Dar-es-Salaam Platform – Bigwa Embayment Leads
- Dar-es-Salaam Platform – Pemba Island Lead
- Wingayongo and Rauruke Area Leads
- Northern Mandawa Basin Leads
- Southern Mandawa Basin Leads
- Central Ruvuma Basin Leads
- Ruvuma Basin Coastal Area Leads
- Coastal Basin – Pemba Island Lead
- Coastal Basin – Tanga Lead



Report – The Petroleum Potential of Tanzania

(indexed and searchable in pdf format, over 300pp, with copious illustrations)



Part A: Regional Synthesis

- I Introduction
 - I.I Geography
 - I.II Politics
 - I.III Economy
 - I.IV Hydrocarbon Industry and Infrastructure
 - I.V Petroleum Legislation

- II History of Exploration
 - II.I Exploration History
 - II.II Database

- III Structure
 - III.I Regional Structural Framework
 - III.II Tectonic Development

- IV Stratigraphy
 - IV.I Pre-rift phase
 - IV.II Syn-rift phase
 - IV.III Transitional phase
 - IV.IV Post-rift phase

- V Petroleum Geochemistry
 - V.I Introduction
 - V.II Hydrocarbon source rocks

Part B: Prospective Sedimentary Basins

VI	Selous Basin
VI.I	Introduction
VI.II	Logistics
VI.III	Previous Exploration
VI.IV	Basin Evolution
VI.V	Reservoirs
VI.VI	Source Rocks
VI.VII	Seals
VI.VIII	Hydrocarbon Plays
VII	Rufiji Trough
VII.I	Introduction
VII.II	Logistics
VII.III	Previous Exploration
VII.IV	Basin Evolution
VII.V	Reservoirs
VII.VI	Source rocks
VII.VII	Seals
VII.VIII	Hydrocarbon Plays
VIII	Ruvu Basin
VIII.I	Introduction
VIII.II	Logistics
VIII.III	Previous Exploration
VIII.IV	Basin Evolution
VIII.V	Reservoirs
VIII.VI	Source Rocks
VIII.VII	Seals
VIII.VIII	Hydrocarbon Plays
IX	Dar-es-Salaam Platform
IX.I	Introduction
IX.II	Logistics
IX.III	Previous Exploration
IX.IV	Basin Evolution
IX.V	Reservoirs
IX.VI	Source Rocks
IX.VII	Seals
IX.IX	Hydrocarbon Plays
X	Coastal Basin
X.I	Introduction
X.II	Logistics
X.III	Previous Exploration
X.IV	Basin Evolution
X.V	Reservoirs
X.VI	Source Rocks
X.VII	Seals

X.VIII	Hydrocarbon Plays
XI	Ruvuma Basin
XI.I	Introduction
XI.II	Logistics
XI.III	Previous Exploration
XI.IV	Basin Evolution
XI.V	Reservoirs
XI.VI	Source Rocks
XI.VII	Seals
XI.VIII	Hydrocarbon Plays
XII	Modern Rift Basins
XII.I	Introduction
XII.II	Logistics
XII.III	Previous Exploration
XII.IV	Basin Evolution
XII.V	Reservoirs
XII.VI	Source Rocks
XII.VII	Seals
XII.VIII	Hydrocarbon Plays
XIII	Mandawa Basin
XIII.I	Introduction
XIII.II	Logistics
XIII.III	Previous Exploration
XIII.IV	Basin Evolution
XIII.V	Reservoirs
XIII.VI	Source Rocks
XIII.VII	Seals
XIII.VIII	Hydrocarbon Plays
XIV	Deep-water Basins

Bibliography

Lynx Information Systems Limited
93-99 Upper Richmond Road
London, SW15 2TG, UK
Tel: +44 20 8780 2634
Fax: +44 20 8780 0931
lynx@lynxinfo.co.uk

Lynx Information Systems Inc
16420 Park Ten Place
Ste 150,
Houston, TX 77084
Tel 281-599-7790
lynx@lynx-info.com
www.lynx-info.co.uk